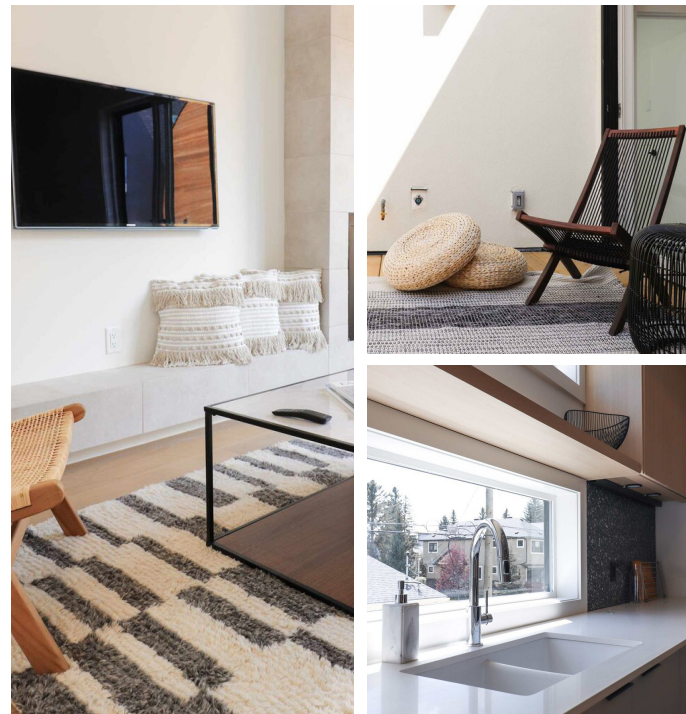


SOLD | Peaks + Plains
1623 48TH AVENUE SW, CALGARY, AB



Details



NUMBER OF UNITS

20



AVG. UNIT SIZE*

2,346 SF

*Total Livable Area



YEAR BUILT

2018



CLOSING DATE

JUNE 2022

Highlights

- + 20 recently constructed, spacious and modern luxury townhomes in the urban community of Altadore
- + Units feature fully-developed basements, vaulted ceilings, rooftop patios, gas fireplaces and lots of natural light through large windows and skylights
- + The luxurious and spacious townhomes attract a wide range of tenant types including young professionals and families that are seeking large layouts with high-end finishes combined with outdoor living space
- + Located walking distance of multiple amenities including the Altadore Shopping Centre, Sandy Beach Park, Glenmore Athletic Park, and numerous schools

For more information, please contact:

Duncan MacLean

Senior Vice President
403 750 0800
duncan.maclean@cbre.com

Richie Bhamra

Senior Vice President
403 303 4569
richie.bhamra@cbre.com

Geoff Mar

Senior Vice President
403 750 0512
geoff.mar@cbre.com

Tyler Allen

Vice President
403 750 0521
tyler.allen@cbre.com

Drew Redekopp

Sales Associate
403 750 0504
drew.redekopp@cbre.com

Austin Croft

Senior Financial Analyst
403 716 2344
austin.croft@cbre.com

Thomas Lee

Senior Financial Analyst
403 716 2346
thomaslee@cbre.com

Aaron Seyoum

Financial Analyst
403 750 0801
aaron.seyoum@cbre.com

Meagan Pitre

Client Services Assistant
403 294 5703
meagan.pitre@cbre.com

NATIONAL INVESTMENT TEAM | CALGARY



This disclaimer shall apply to CBRE Limited, real estate brokerage, and to all other divisions of the corporation, to include all employees and independent contractors ("CBRE"). The information set out herein, including, without limitation, any projections, images, opinions, assumptions and estimates obtained from third parties (the "Information") has not been verified by CBRE, and CBRE does not represent, warrant or guarantee the accuracy, correctness and completeness of the Information. CBRE does not accept or assume any responsibility or liability, direct or consequential, for the information or the recipient's reliance upon the information. The recipient of the information should take such steps as the recipient may deem necessary to verify the information prior to placing any reliance upon the information. The information may change and any property described in the information may be withdrawn from the market at any time without notice or obligation to the recipient from CBRE. CBRE and the CBRE logo are the service marks of CBRE Limited and/or its affiliated or related companies in other countries. All other marks displayed on this document are the property of their respective owners. All Rights Reserved.

www.nitcalgary.com