

SHAWVILLE LANDING

108, 202 & 304 Shawville Place SE

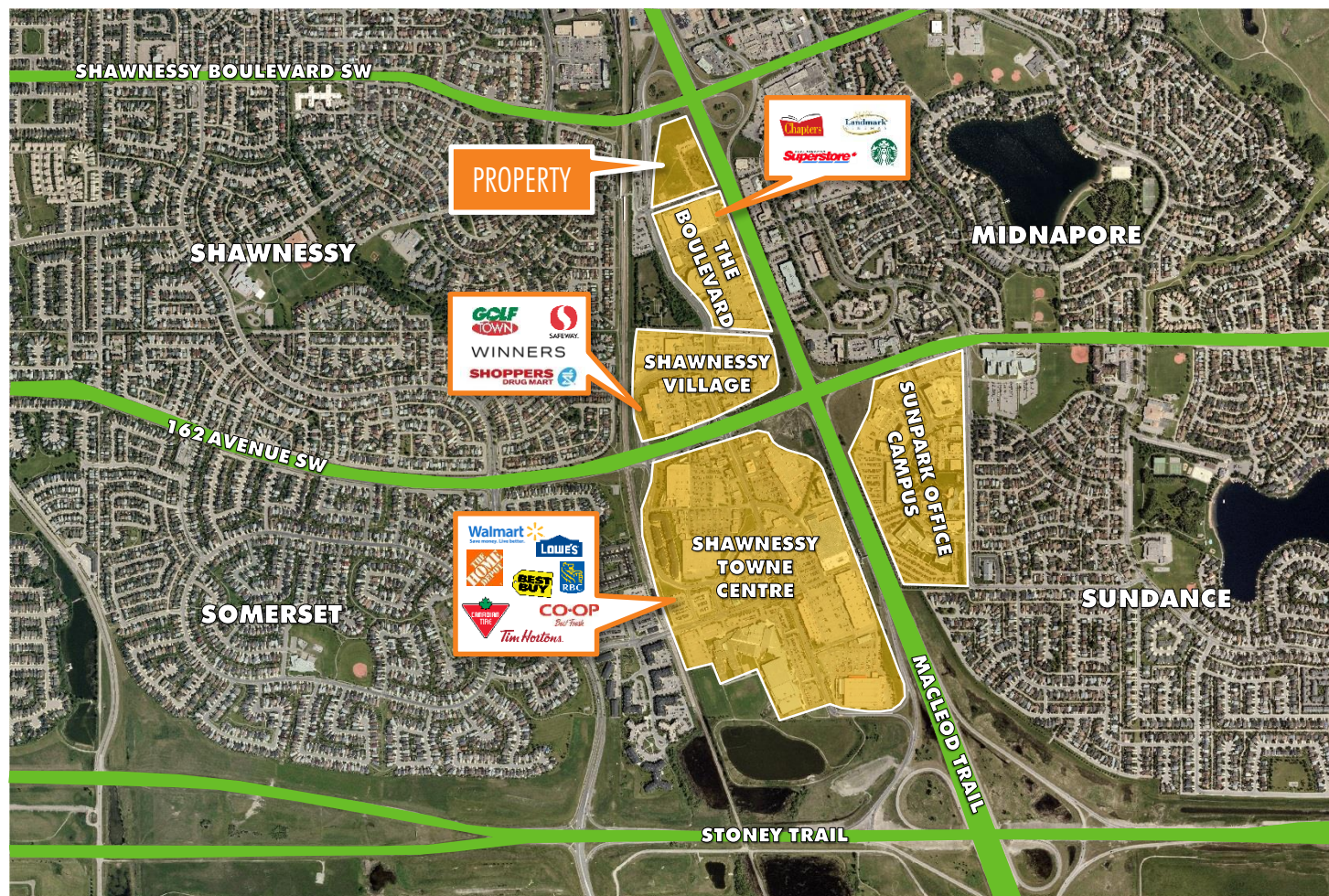
FOR SALE

Exceptional 7.23 Acre Macleod Trail Corridor Development Opportunity



INVESTMENT HIGHLIGHTS

- Prime development location along Macleod Trail, with access from Shawville Boulevard SE
- Multiple commercial amenities situated walking distance from the site, including the Boulevard Shopping Centre, Shawnessy Village and Shawnessy Towne Centre
- Located directly beside the Shawnessy LRT Station and bus loop
- Attractive DC land use that follows C-COR1, with the addition of four discretionary uses including Multi-Residential Development



PROPERTY DETAILS

Addresses:	108, 202 & 304 Shawville Place SE		
Type:	Development Land		
Community:	Shawnessy		
Site Size Breakdown (Acres):	108	202	308
	1.79	3.41	2.03
Total Site Size:	7.23 Acres (314,938 SF)		
Land Use:	Direct Control - 120D2014		
FAR:	3.5		
FAR for Commercial Uses:	0.5		

 SUPERIOR MACLEOD TRAIL LOCATION

 EXCEPTIONAL DEVELOPMENT SITE

 STRONG NEARBY DEMOGRAPHICS

SHAWVILLE LANDING

108, 202 & 304 Shawville Place SE



CONTACT US

Garry Beres

Executive Vice President
403 750 0522
garry.beres@cbre.com

Duncan MacLean

Senior Vice President
403 750 0800
duncan.maclea@cbre.com

Richie Bhamra

Vice President
403 303 4569
richie.bhamra@cbre.com

Geoff Mar

Senior Vice President
403 750 0512
geoff.mar@cbre.com

Tyler Allen

Associate Vice President
403 750 0521
tyler.allen@cbre.com

OFFERING PROCESS

Shawville Landing is being offered for sale without a list price. Following the execution of the Vendor's form of confidentiality agreement, CBRE will provide qualified prospective purchasers with access to detailed information on the property. The Vendor is prepared to respond to expressions of interest to purchase the property as they are received by CBRE.

This disclaimer shall apply to CBRE Limited, Real Estate Brokerage, and to all other divisions of the Corporation; to include all employees and independent contractors ("CBRE"). The information set out herein, including, without limitation, any projections, images, opinions, assumptions and estimates obtained from third parties (the "Information") has not been verified by CBRE, and CBRE does not represent, warrant or guarantee the accuracy, correctness and completeness of the Information. CBRE does not accept or assume any responsibility or liability, direct or consequential, for the Information or the recipient's reliance upon the Information. The recipient of the Information should take such steps as the recipient may deem necessary to verify the Information prior to placing any reliance upon the Information. The Information may change and any property described in the Information may be withdrawn from the market at any time without notice or obligation to the recipient from CBRE. CBRE and the CBRE logo are the service marks of CBRE Limited and/or its affiliated or related companies in other countries. All other marks displayed on this document are the property of their respective owners. All Rights Reserved.